



2 Walton Crescent

Manadon, Plymouth, PL5 3HR

£1,100 PCM



End-terraced property available for long-term rental with unfurnished accommodation comprising kitchen/diner, lounge, 2 bedrooms & bathroom. Double-glazing & gas central heating. Gardens to front & rear. Recently redecorated and carpeted.



2 WALTON CRESCENT, MANADON, PLYMOUTH PL5 3HR

ACCOMMODATION

Obscured double-glazed door leading into the entrance hall.

ENTRANCE HALL

Stairs rising to the first floor. Door leading to the lounge.

LOUNGE 15'10" x 10'7" excl. side bay (4.84 x 3.23 excl. side bay)

Double-glazed window to the front. Double-glazed window to the side bay.

KITCHEN/DINING ROOM 13'8" x 15'11" (4.17 x 4.86)

Double-glazed windows to the front and rear elevations. Under-stairs storage cupboard. Fitted kitchen with a range of eye-level and base units, roll-edged work surfaces and tiled splash-backs. Inset single-drainer sink unit with mixer tap. 4-ring gas hob with electric oven beneath. Space and plumbing for washing machine. Door providing access to the rear garden.

FIRST FLOOR LANDING

Window to the rear. Loft hatch. Door to bedroom one.

BEDROOM ONE 15'10" x 10'7" (4.84 x 3.23)

Double-glazed windows to the front and rear elevations.

BATHROOM 7'2" x 5'6" (2.19 x 1.70)

Fitted with a modern white suite comprising panel bath with twin handgrips, shower unit with spray attachment over the bath with tiled area surround, pedestal wash handbasin and low-level toilet. Obscured double-glazed window to the rear.

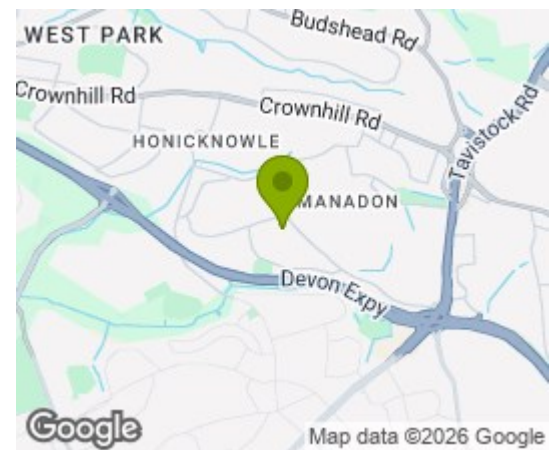
BEDROOM TWO 10'5" x 9'10" (3.18 x 3.02)

Double-glazed window to the front. Built-in storage cupboard housing the gas boiler.

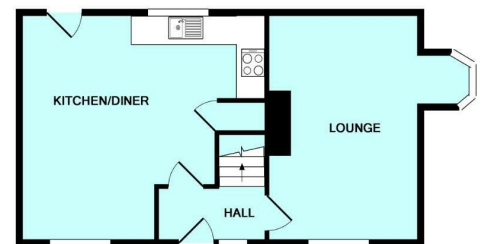
OUTSIDE

To the front of the property there is an open plan area of lawn with a hedge to both sides. The rear is accessed via a path and steps. The garden is level and laid mainly to lawn, enclosed by a wall and fencing.

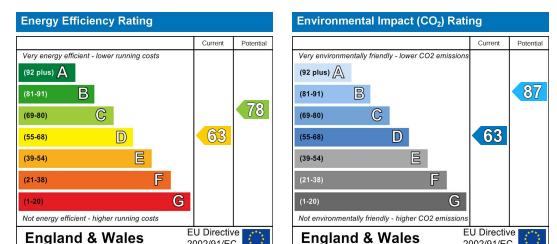
Area Map



Floor Plans



Energy Efficiency Graph



These particulars, whilst believed to be accurate are set out as a general outline only for guidance and do not constitute any part of an offer or contract. Intending purchasers should not rely on them as statements of representation of fact, but must satisfy themselves by inspection or otherwise as to their accuracy. No person in this firm's employment has the authority to make or give any representation or warranty in respect of the property.